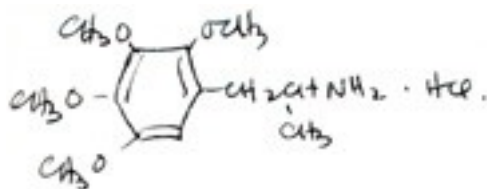


## Subacute Trials.



	date	time	dose	comments.
	4/9/66	9:35AM	0.8 mg	nothing.
	6/22/66	9:30AM	2.1 mg	nothing. (1/4 8:05, 3/4 9:30).
	7/8/66	10:00AM	5.0 mg	nothing. (one shot)
	10/29/66	8:25AM	8.4 mg	nothing.
	3/31/67	8:00AM	14.0 mg	nothing. Terrible taste.
	4/4/67	11:15AM	20.4 mg	possibly exaggerated reflexes (leg, eye) otherwise nothing.
±	4/26/67	9:05AM	30.0 mg	definite threshold. dilation - humor - wild day [with] $X^2$ calculation on PDP-7, S.F. Motor Vehicle Dept.
+	5/2/67	~5PM (RT)	34 mg	Dance Class - gastric upset - nonetheless- distinct intoxication - next AM - foul headache. Active level will be, by extrapolation about 50 mg - so 6 x mescaline.